

Digital Frontier

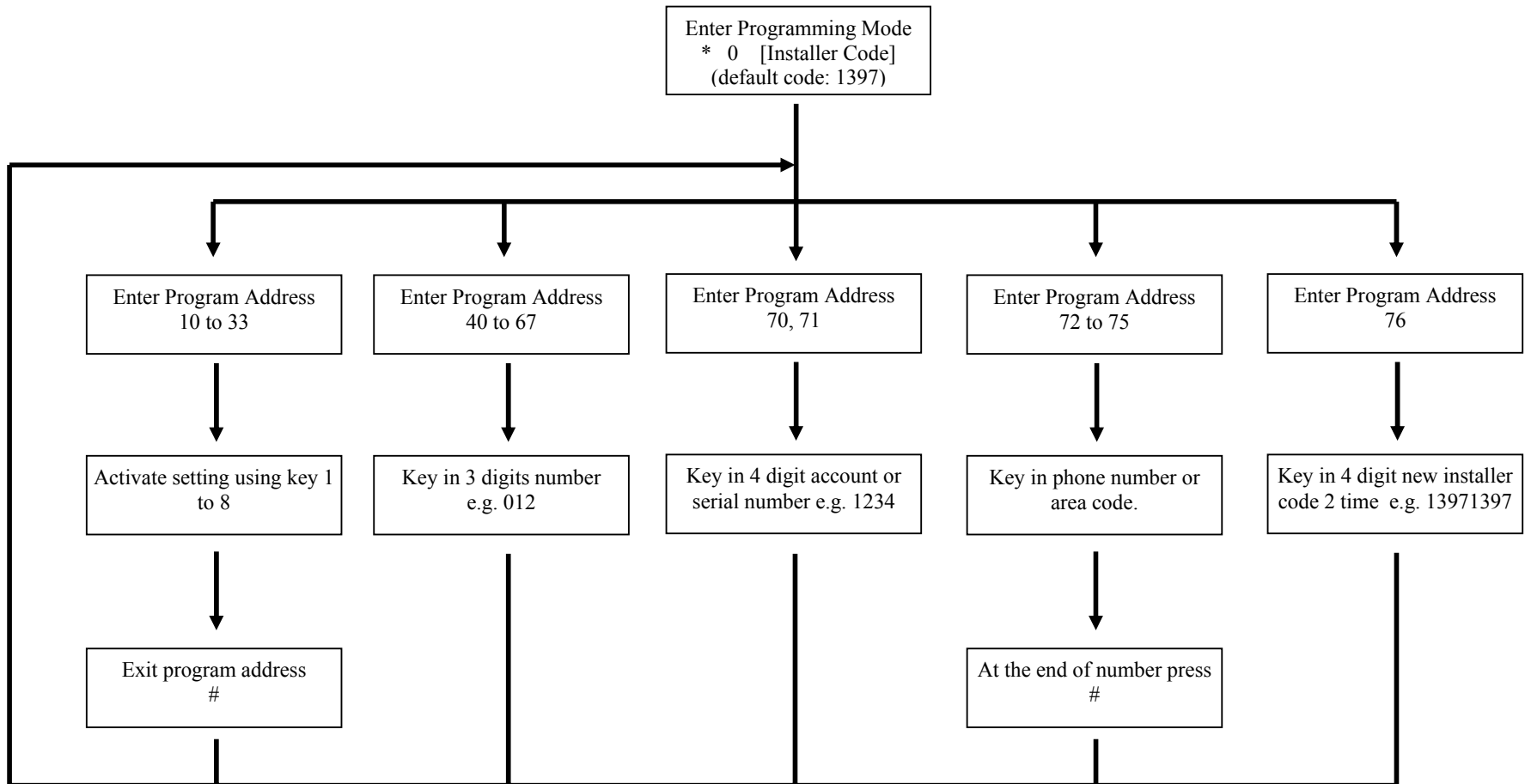
DFA5300V2

16 zones Voice Alarm System

Installer Manual

V2 rev 0

Programming Flow Chart Diagram



Programming Address Summary DFA5300 V2 16 zones

Add.	Description	Default Zone															
		1	2	3	4	5	6	7	8	9	10	11	12	13	14	15	16
10	Entrance zone. Zone led on mean the zone is assigned as this type of zone.	●	○	○	○	○	○	○	○	○	○	○	○	○	○	○	
11	Internal Delay zone. Zone led on mean the zone is assigned as this type of zone.	○	●	○	○	○	○	○	○	○	○	○	○	○	○	○	
12	Internal zone. Zone led on mean the zone is assigned as this type of zone.	○	○	○	○	○	○	○	○	○	○	○	○	○	○	○	
13	Instant zone. Zone led on mean the zone is assigned as this type of zone.	○	○	●	●	●	●	●	●	●	●	●	●	●	●	●	
14	24 Hour zone. Zone led on mean the zone is assigned as this type of zone.	○	○	○	○	○	○	○	●	○	○	○	○	○	○	○	
15	Fire zone. Zone led on mean smoke detector is connected to this zone.	○	○	○	○	○	○	○	○	○	○	○	○	○	○	○	
16	Silent zone. Zone led on mean that the zone will not activate the siren when it is trigger. But it will still activate all telephone features.	○	○	○	○	○	○	○	○	○	○	○	○	○	○	○	
17	Normally Open zone. Zone led on mean normally open sensor is connected to this zone.	○	○	○	○	○	○	○	○	○	○	○	○	○	○	○	
18	Zone respond. On mean slow respond zone and off mean fast respond zone.	○	○	○	○	○	○	○	○	○	○	○	○	○	○	○	
19	Intelligent zone group 1. On mean zone is program to the intelligent zone group 1.	○	○	○	○	○	○	○	○	○	○	○	○	○	○	○	
20	Intelligent zone group 2. On mean zone is program to the intelligent zone group 2.	○	○	○	○	○	○	○	○	○	○	○	○	○	○	○	
21	Zone Partition 1. On mean zone is assign to partition 1.	●	●	●	●	●	●	●	●	●	●	●	●	●	●	●	
22	Zone Partition 2. On mean zone is assign to partition 2.	○	○	○	○	○	○	○	○	○	○	○	○	○	○	○	
23	Auto reset Zone. On mean the zone will be restore after the bell time in [26].	●	●	●	●	●	●	●	●	●	●	●	●	●	●	●	
24	CMS report zone. On mean zone trigger will report to CMS.	●	●	●	●	●	●	●	●	●	●	●	●	●	●	●	
25	Partition 1 user. On mean user has access right to partition 1. (User 1 to 14 only)	●	●	●	●	●	●	●	●	●	●	●	●	●	●	●	
26	Partition 2 user. On mean user has access right to partition 2. (User 1 to 14 only)	○	○	○	○	○	○	○	○	○	○	○	○	○	○	○	
Add.	Description	Default Zone															
		1	2	3	4	5	6	7	8								
30	CMS reporting. Zone Led 1 on mean: Report Panic (activated keypad panic button). Zone Led 2 on mean: Report Duress (user #8 will become duress code). Zone Led 3 on mean: Report Arm/Disarm.																
	Zone Led 4 on mean: Report AC Loss Zone Led 5 on mean: Report enter / exit programming mode. Zone Led 6 on mean: Report telco fault. Zone Led 7 on mean: Report Bypass. Zone Led 8 on mean: Report Battery low.																
31	Communicator Setting 1. Zone Led 1 on mean: Enable personal reporting. Zone Led 2 on mean: Enable CMS reporting Zone Led 3 on mean: Enable progress tone monitoring on fix line. Zone Led 4 on mean: Enable Fix line.	●	○	○	○	○	○	○									
	Zone Led 5 on mean: Enable GSM. (only available in GSM version) Zone Led 8 on mean: Enable battery low trouble warning on keypad.																

Add.	Description	Default Zone 1 2 3 4 5 6 7 8
32	<p>Communicator Setting 2.</p> <p>Zone Led 1 on mean: Enable AC loss personal reporting. Zone Led 2 on mean: Enable Battery low personal reporting. Zone Led 3 on mean: Double ring answering Zone Led 4 on mean: Enable double CMS reporting. (only available in GSM version)</p> <p>Zone Led 5 on mean: Enable SMS reporting. 16 SMS report. Zone Led 6 on mean: Enable 20 SMS reporting. Zone Led 7 on mean: Enable 30 SMS reporting.</p>	●○○○ ○○○○
33	<p>System Option.</p> <p>Zone Led 1 on mean: Keypad buzzer on during entry delay. Zone Led 2 on mean: Keypad buzzer on during exit delay. Zone Led 3 on mean: Short beeping during delay. Zone Led 4 on mean: DTMF dialing, else pulse dialing.</p> <p>Zone Led 5 on mean: Enable one key arming using H or A. Zone Led 6 on mean: Enable keypad panic button P. Zone Led 7 on mean: Enable RF remote control arming.</p>	●●●● ●○○○

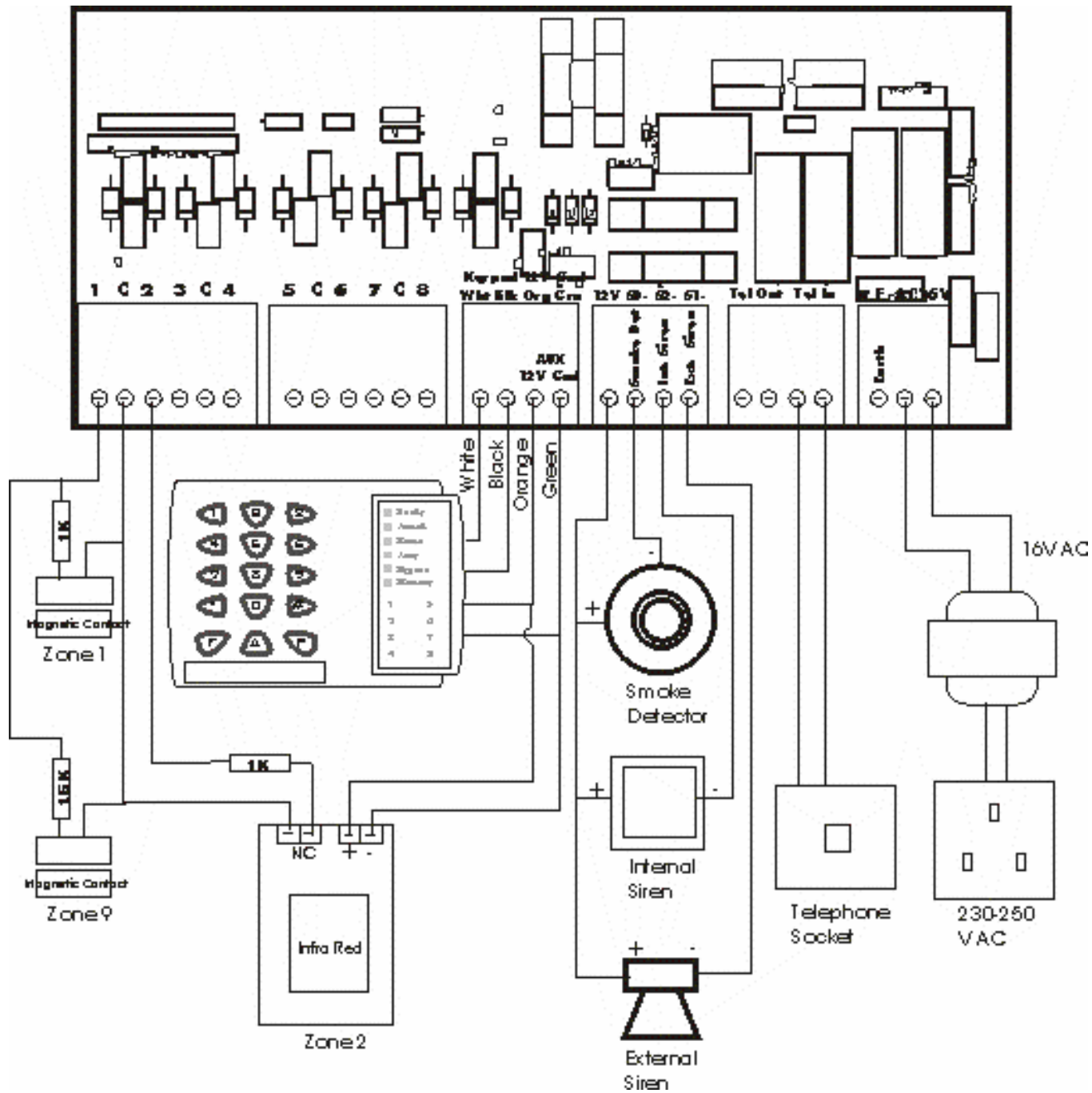
Number programming.		
Add.	Description	Default Value
40	Entry timer partition 1. From 0 to 255 sec.	040
41	Entry timer partition 2. From 0 to 255 sec.	040
42	Exit timer partition 1. From 0 to 255 sec.	120
43	Exit timer partition 2. From 0 to 255 sec.	120
44	Bell timer for auto reset zone. 0 to 255 minute.	005
45	Fast respond timer. [0 to 255] * 1.6 ms.	008
46	Slow respond timer. [0 to 255] * 1.6 ms	015
47	Intelligent zone counter 1. 0 to 255 times. If counter exceed, intelligent zone group 1 trigger.	002
48	Intelligent zone counter 2. 0 to 255 times. If counter exceed, intelligent zone group 2 trigger.	003
49	Intelligent zone reset timer 1. 0 to 255 minutes. Intelligent zone group 1 counter reset timer.	010
50	Intelligent zone reset timer 2. 0 to 255 minutes. Intelligent zone group 2 counter reset timer.	030
51	PGM1 (See PGM programming sheets)	008
52	PGM2 (See PGM programming sheets)	009
53	PGM3 (See PGM programming sheets)	000
54	PGM4 (See PGM programming sheets)	000
55	Keypad lock digit. 0 to 255 times of password error before keypad lock. (Prevent password guessing on keypad).	012
56	Keypad lock time. 0 to 255 seconds keypad lock time.	060
57	Communicator Dialing time. 0 to 255 second. Specified the time to wait for the user answer during personal reporting.	040
58	Communicator Idle time. 0 to 255 sec. Specified the time to wait for a key press before auto hang-up during personal reporting.	040
59	Communicator Dial loop. Number of time to dial on each telephone number. (for both personal and CMS reporting).	010
60	Answer ring. Number ring to wait before answer call. 0 to 255 ring. (Feature available with voice card module only)	008
61	Communicator Password Error auto-hang-up. Number of error password digit is allowed to key in before communicator auto hang-up. (Prevent password guessing through phone).	012
62	CMS Periodic Report. 001 to 255 hour. (000 mean disable).	024
63	Reserved.	000

Add.	Description	Default Value
64	Reserved.	000
65	Reserved.	255
66	Reserved.	000

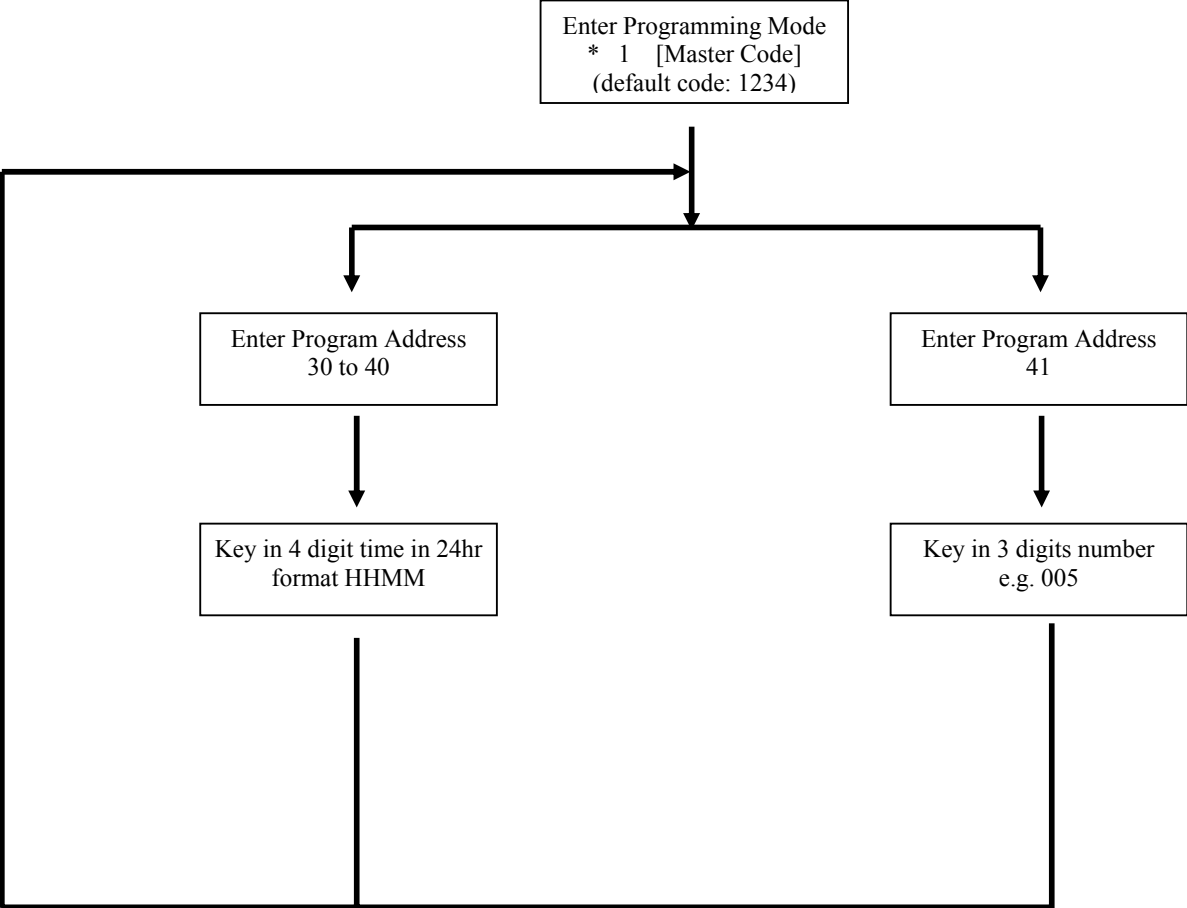
Other programming.		
Add.	Description	Default Value
70	CMS Account number 1. 4 digits Contact ID user code.	0000
71	CMS Account number 2. 4 digits Contact ID user code.	0000
72	CMS Phone number 1. Maximum 15 digits. P for pause 2 seconds. Ended phone number with #.	Nil
73	CMS Phone number 2. Maximum 15 digits. P for pause 2 seconds. Ended phone number with #.	Nil
74	Area Code or Prefix. Maximum 5 digits. P for pause 2 seconds. Ended phone number with #.	Nil
75	Reserved.	000
76	Change Installer code. The 4 digit installer code must be key in 2 times. If both installer codes are different, it will not be save.	1397
90	Firmware version. Display Firmware version.	
97	Reset SIM card SMS. Reset SIM card SMS to default. (only available in GSM version).	
98	Reset user code. Reset all user code.	
99	Reset Panel. Reset all user code and programming setting except installer code.	

PGM Definition for DFA5300 V2 16 zones

PGM Definition Value	
Value	Description
000-015	Follow zone open. Enable 24hr without auto off feature. E.g. 000 (follow zone 1), 001 (follow zone 2) etc. Suitable for indoor lighting that need to be auto on all time and turn off manually. E.g. Office with low natural light, turn on light or air condition automatically when PIR detect movement in the morning and manually off after office hour.
016-031	Follow zone open. Enable 24hr with auto off feature (user programming address 41). Suitable for indoor lighting that need to be auto on all time and with energy saving. E.g. Store room light.
032-047	Follow zone open. Enable during night mode without auto off feature. Suitable for outdoor lighting that need to be auto on during night mode and turn off manually. E.g. Shop with strong natural light, turn on automatically when PIR detect movement during night time and manually off after business hour.
048-063	Follow zone. Enable during night mode with auto off feature (user programming address 41). Suitable to act as sensor light for indoor and outdoor. E.g. Car porch light, Living hall light etc.
064	Follow Timer 1 (user programming address 37 & 38).
065	Follow Timer 2 (user programming address 39 & 40).
066	Follow Timer 1 and Timer 2 (user programming address 37 to 40).
067	Follow Entry Exit time. Enable 24hr without auto off feature. E.g. Office with low natural light that can turn on upon main door open and turn off automatically after system arm.
068	Follow Entry Exit time. Enable 24hr with auto off feature. E.g. Staircase light for office that can turn on automatically upon main door open for entry illumination and turn off automatically for energy saving. After office hour, upon system arm will turn on automatically for exit illumination and auto off after exit timer expired.
069	Follow Entry Exit time. Enable during night mode without auto off feature. E.g. Living hall light with strong natural light that is only necessary during night mode, can turn on automatically during entry and stay on until user turn off manually. Upon system arm during night time, will turn on until exit timer expired.
070	Follow Entry Exit time. Enable during night mode with auto off feature. E.g. Car porch light that turn on during entry and exit and turn off automatically.
71-86	Follow zone trigger. E.g. Perimeter sensor (silent mode zone) trigger warning light or buzzer.
87-102	Follow zone trigger. Pulse signal. E.g. DVR channel switching.
103	Manual on/off only.
104	*Activate when fully arm. Cannot turn on/off manually.
105	*Activate when trouble condition exist. Cannot turn on/off manually.
106	*Activate when zones trigger, auto off some time after system disarm (user programming address 41). Cannot turn off manually while zone still trigger.
107	*Activate when zones trigger, off after disarm. Cannot turn on/off manually.



User Programming



User Programming Address Summary DFA5300 V2 16 zones

User programming.		
Addr.	Description	Default Value
30	Current Time. 24hr format HHMM, e.g for 11:30pm, key in 2330	-
31	Auto Arm Time for Partition 1. 24hr format HHMM, e.g for 11:30pm, key in 2330. To disable this timer key in 9999.	9999
32	Auto Disarm Time for Partition 1. 24hr format HHMM, e.g for 11:30pm, key in 2330. To disable this timer key in 9999.	9999
33	Auto Arm Time for Partition 2. 24hr format HHMM, e.g for 11:30pm, key in 2330. To disable this timer key in 9999.	9999
34	Auto Disarm Time for Partition 2. 24hr format HHMM, e.g for 11:30pm, key in 2330. To disable this timer key in 9999.	9999
35	Night mode begin time. 24hr format HHMM, e.g for 11:30pm, key in 2330. To disable this timer key in 9999.	9999
36	Night mode end time. 24hr format HHMM, e.g for 11:30pm, key in 2330. To disable this timer key in 9999.	9999
37	PGM On Time 1. 24hr format HHMM, e.g for 11:30pm, key in 2330. To disable this timer key in 9999.	9999
38	PGM Off Time 1. 24hr format HHMM, e.g for 11:30pm, key in 2330. To disable this timer key in 9999.	9999
39	PGM On Time 2. 24hr format HHMM, e.g for 11:30pm, key in 2330. To disable this timer key in 9999.	9999
40	PGM Off Time 2. 24hr format HHMM, e.g for 11:30pm, key in 2330. To disable this timer key in 9999.	9999
41	PGM Auto Off Timer. From 1 to 255 minute	005

