

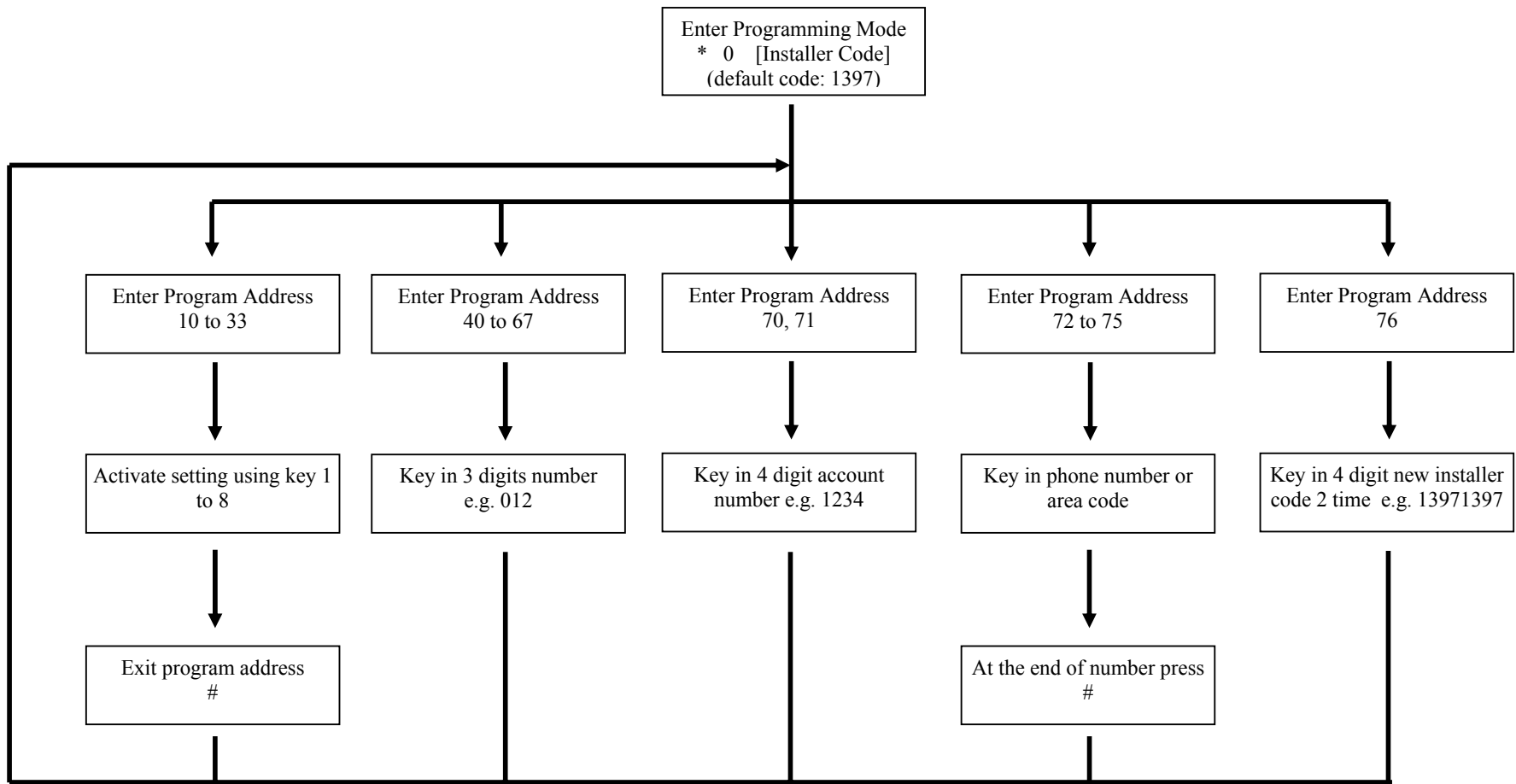
Digital Frontier

DFA3300 8 zones Alarm System

Installer Manual

V1 rev 0

Programming Flow Chart Diagram



Add.	Description	Default Zone 1 2 3 4 5 6 7 8
33	System Option. Zone Led 1 on mean: Keypad buzzer on during entry delay. Zone Led 2 on mean: Keypad buzzer on during exit delay. Zone Led 3 on mean: Short beeping during delay. Zone Led 4 on mean: DTMF dialing, else pulse dialing. Zone Led 5 on mean: Enable one key arming using H or A. Zone Led 6 on mean: Enable keypad panic button P. Zone Led 7 on mean: Enable RF remote control arming.	●●●●●○○○

Number programming		
Add.	Description	Default Value
40	Entry timer partition 1. From 0 to 255 sec.	040
41	Entry timer partition 2. From 0 to 255 sec.	040
42	Exit timer partition 1. From 0 to 255 sec.	120
43	Exit timer partition 2. From 0 to 255 sec.	120
44	Bell timer for auto reset zone. 0 to 255 minute.	005
45	Fast respond timer. [0 to 255] * 1.6 ms.	008
46	Slow respond timer. [0 to 255] * 1.6 ms	015
47	Intelligent zone counter 1. 0 to 255 times. If counter exceed, intelligent zone group 1 trigger.	002
48	Intelligent zone counter 2. 0 to 255 times. If counter exceed, intelligent zone group 2 trigger.	003
49	Intelligent zone reset timer 1. 0 to 255 minutes. Intelligent zone group 1 counter reset timer.	010
50	Intelligent zone reset timer 2. 0 to 255 minutes. Intelligent zone group 2 counter reset timer.	030
51	PGM1 (Siren 2 negative, label as S2- on board). 000 mean PGM active when fully arm. 001 mean PGM active during entry or exit delay. 002 mean PGM active following keypad buzzer. 003 mean PGM is controlled by phone. 004 mean PGM active when trouble condition exists. 005 mean PGM active when siren on, PGM will turn off after some delay (delay follow Bell Timer value) 006 mean PGM active when use telephone line cut off. 007 mean PGM active when zone trigger. 008 mean PGM use as internal siren. 009 mean PGM use as smoke detector.	008
52	PGM2 (Smoke Detector Power, label as SD- on board). Same as above.	009
53	Reserved.	000
54	Reserved.	000
55	Keypad lock digit. 0 to 255 times of password error before keypad lock. (Prevent password guessing on keypad).	012
56	Keypad lock time. 0 to 255 seconds keypad lock time.	060

Add.	Description	Default Value
57	Communicator Dialing time. 0 to 255 second. Specified the time to wait for the user answer during personal reporting.	040
58	Communicator Idle time. 0 to 255 sec. Specified the time to wait for a key press before auto hang-up during personal reporting.	040
59	Communicator Dial loop. Number of time to dial on each telephone number. (for both personal and CMS reporting).	010
60	Answer ring. Number ring to wait before answer call. 0 to 255 ring. (Feature available with voice card module only)	008
61	Communicator Password Error auto-hang-up. Number of error password digit is allowed to key in before communicator auto hang-up. (Prevent password guessing through phone).	012
62	CMS Periodic Report. 001 to 255 hour. (000 mean disable).	024
63	Reserved.	000
64	Reserved.	000
65	Reserved.	255
66	Reserved.	000
67	Reserved.	000

Other programming		
Add.	Description	Default Value
70	CMS Account number 1. 4 digits Contact ID user code.	0000
71	CMS Account number 2. 4 digits Contact ID user code.	0000
72	CMS Phone number 1. Maximum 15 digits. P for pause 2 seconds. Ended phone number with #.	Nil
73	CMS Phone number 2. Maximum 15 digits. P for pause 2 seconds. Ended phone number with #.	Nil
74	Area Code or Prefix 1. Maximum 5 digits. P for pause 2 seconds. Ended phone number with #.	Nil
75	Area Code or Prefix 2. Maximum 5 digits. P for pause 2 seconds. Ended phone number with #.	Nil
76	Change Installer code. The 4 digit installer code must be key in 2 times. If both installer codes are different, it will not be save.	1397
90	Firmware version. Display Firmware version.	
98	Reset user code. Reset all user code.	
99	Reset Panel. Reset all user code and programming setting except installer code.	

