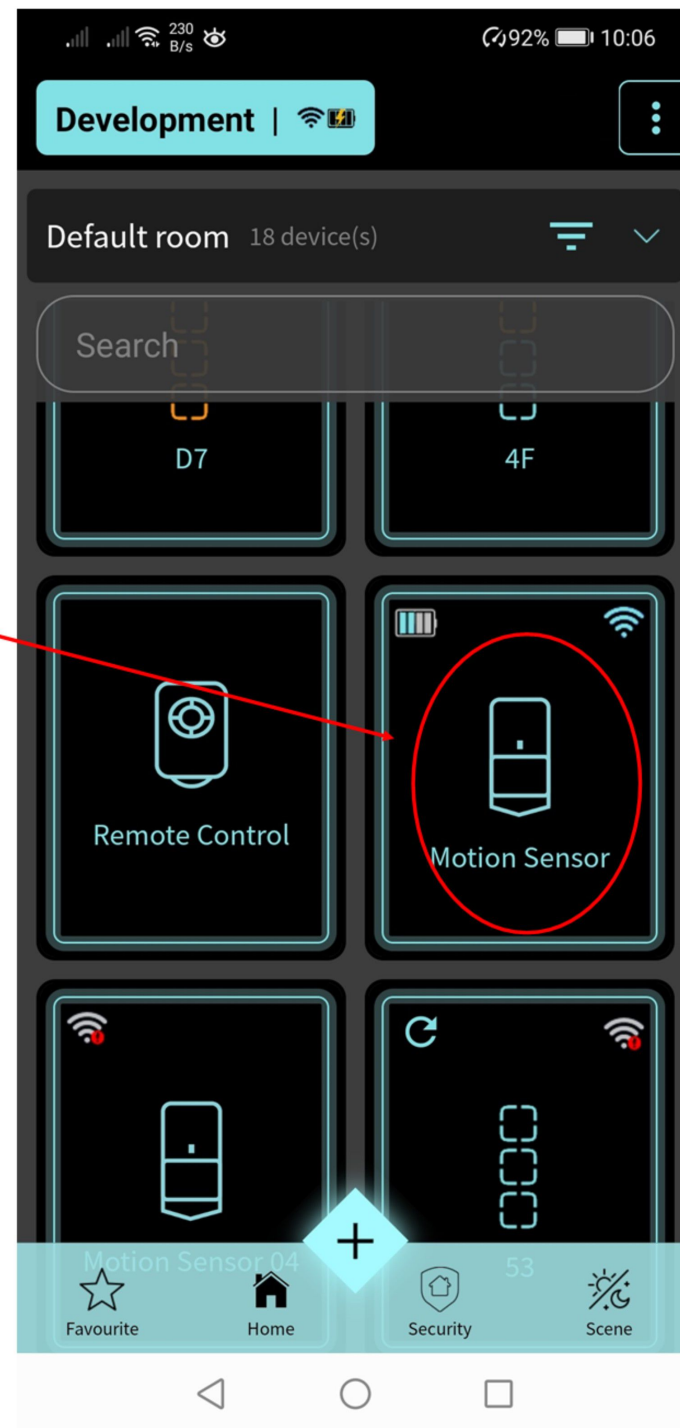


Click to enter
sensor page
using main
account



157
B/s

92%10:05

←Main Door2

Triggering type

Instant

False prevention

Not in group

Response time (millisecond)

8

For vibration sensor used. The HIGHER the value, the LESS sensitive the vibration sensor is.

Door / Window chime

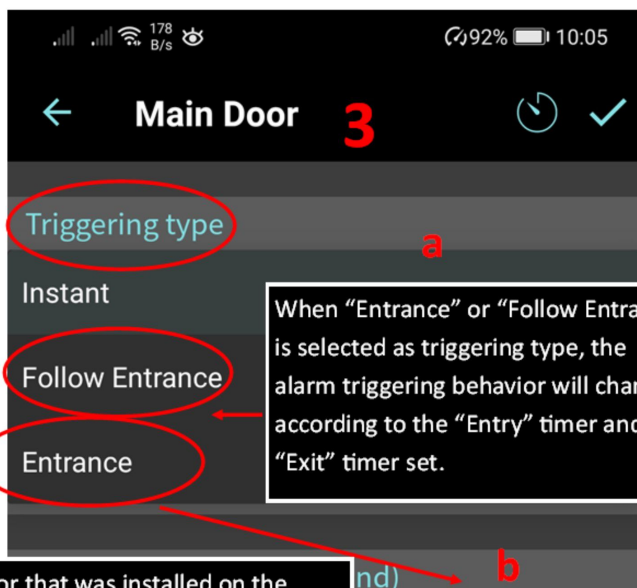
Disable

When door chime is ENABLED, the IoT Hub will produce a "beep" sound when sensor is opening or vibration is detected.

Disable/Enable in alarm system

Enable

When sensor is DISABLED, the sensor will NO longer trigger the alarm. Task (automation) that was associated with this sensor will still function normally.



When "Entrance" or "Follow Entrance" is selected as triggering type, the alarm triggering behavior will change according to the "Entry" timer and "Exit" timer set.

Usually the **PIR MOTION** sensor that was installed on the pathway to disarm, can be configured as "Follow Entrance". Multiple pir motion sensors are allowed to configured as "Follow Entrance".

When the motion sensor is configured as "Follow Entrance", and "Exit" timer was set to 60s, when the alarm is armed, within 60s, moving across the pathway will not trigger the alarm to allow the user to exit the house. (Same as "Entrance")

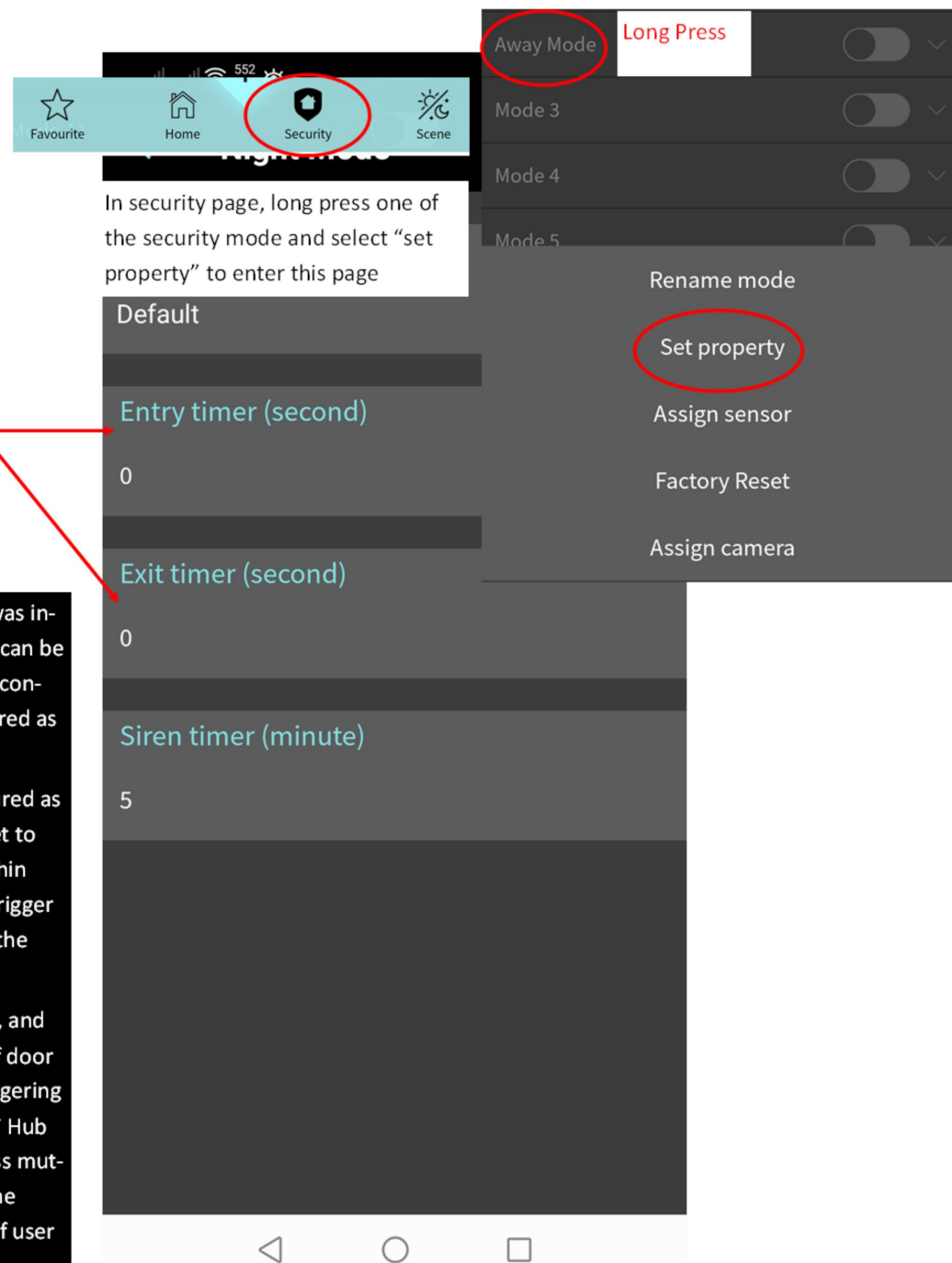
When "Entry" timer was set to 60s, and the alarm is armed. The opening of door which was configured as ("Entrance") will start the 60s timer without triggering the alarm. During this time, the pir motion sensor that was configured as "Follow Entrance" will not be triggered as well when user pass by (Same as "Entrance"). The alarm will be triggered if user didn't disarm after 60s.

When "Entry" timer was set to 60s, and the alarm is armed. When the door is NOT open ("Entrance"), and pir motion sensor that was configured as "Follow Entrance" is triggered when someone pass by, the alarm will straight away triggered without starting the 60s timer.

Usually the **CONTACT** sensor that was installed on the main entrance door, can be configured as "Entrance". Multiple contact sensors are allowed to configured as "Entrance".

When the contact sensor is configured as "Entrance", and "Exit" timer was set to 60s, when the alarm is armed, within 60s, opening of the door will not trigger the alarm to allow the user to exit the house.

When "Entry" timer was set to 60s, and the alarm is armed. The opening of door will start the 60s timer without triggering the alarm. During this time, the IoT Hub will producing "beep" sound (unless muted), to inform the user to disarm the alarm. The alarm will be triggered if user didn't disarm after 60s.



In security page, long press one of the security mode and select "set property" to enter this page

Default

Entry timer (second)

0

Exit timer (second)

0

Siren timer (minute)

5