

Synchronized Two Ways Switch for Staircase

Minimum Device

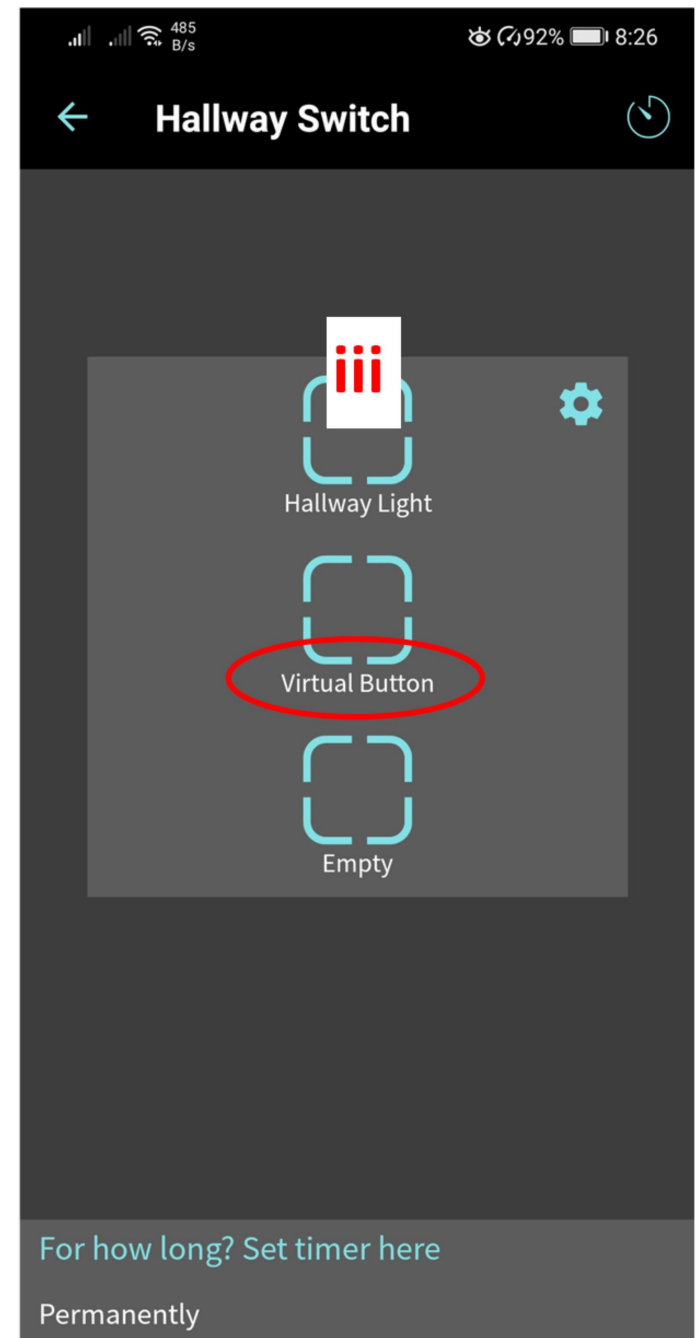
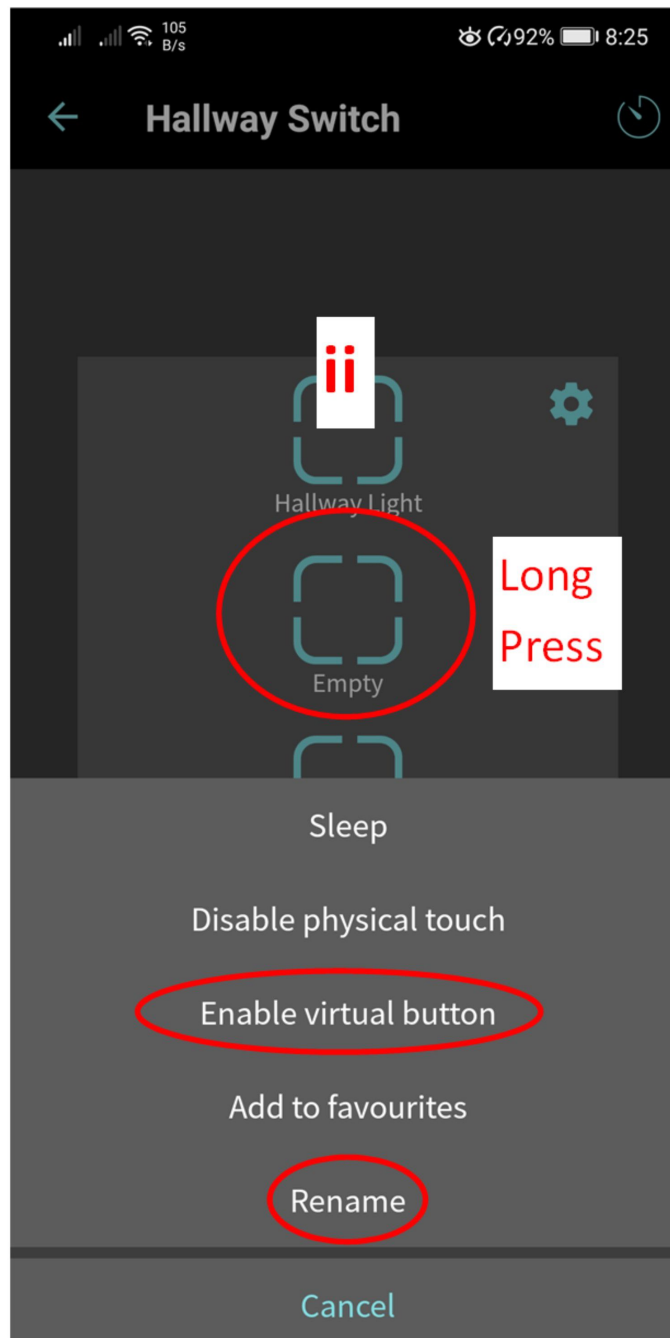
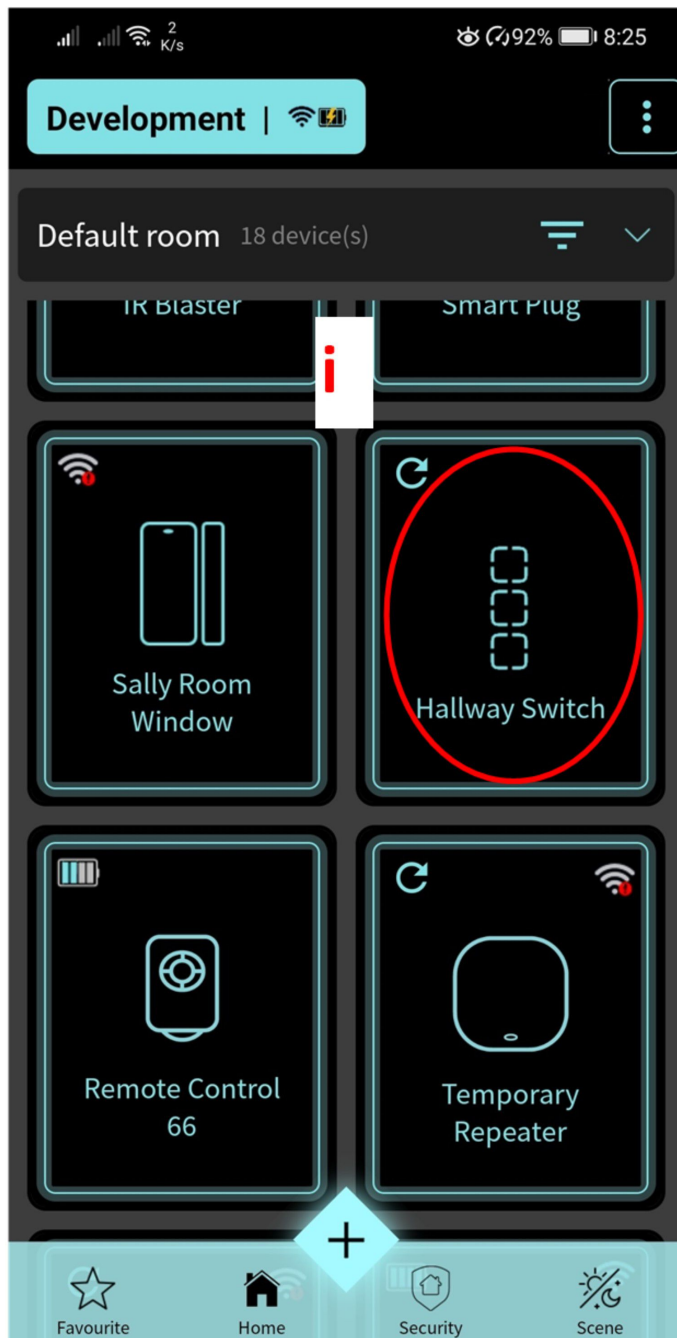
requirement :

2 x HomeRevon Smart Switches

Pre-requisite :

1. Enable virtual button of the particular HomeRevon Smart Switch

Enable Virtual Button



Task

The screenshot displays a multi-step configuration process for a task in a smart home application. The interface is divided into five main sections, each representing a step:

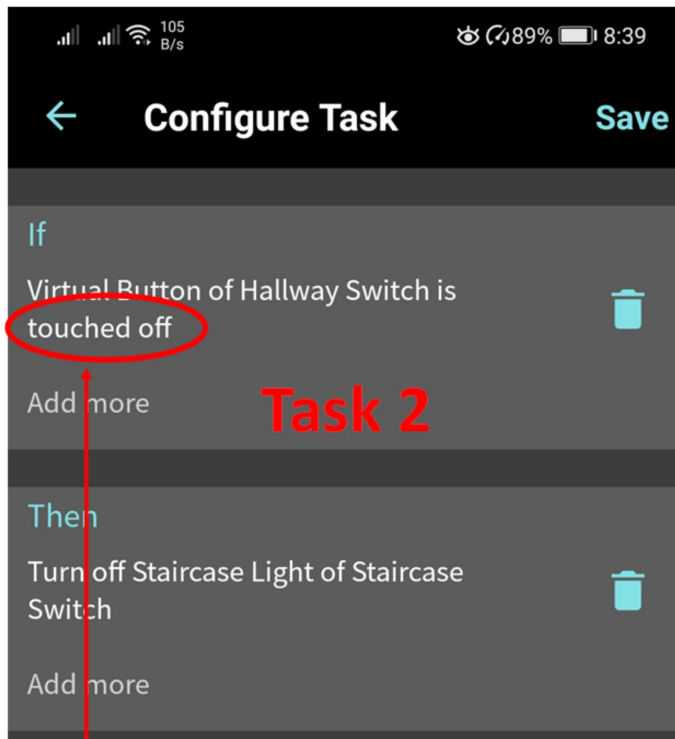
- Task Step 1a:** The 'If' condition menu. The 'Hallway Switch' option is highlighted with a red circle.
- Task Step 1b:** The 'Virtual Button' selection screen. The 'Virtual Button' option is highlighted with a red circle.
- Task Step 1c:** The 'is' condition menu. The 'touched on' option is highlighted with a red circle.
- Task Step 1d:** The 'Then' action menu. The 'Staircase Switch' option is highlighted with a red circle.
- Task Step 1e:** The final configuration screen for the 'Staircase Switch' action.

Navigation buttons like 'If', 'Hallway Switch', 'Done', 'Then', and 'Staircase Switch' are visible at the top of each step. The bottom of the screen shows standard Android navigation icons.

This screenshot shows the 'Configure Task' screen, which summarizes the configured task:

- Condition:** If Virtual Button of Hallway Switch is touched on.
- Action:** Then Turn on Staircase Light of Staircase Switch.

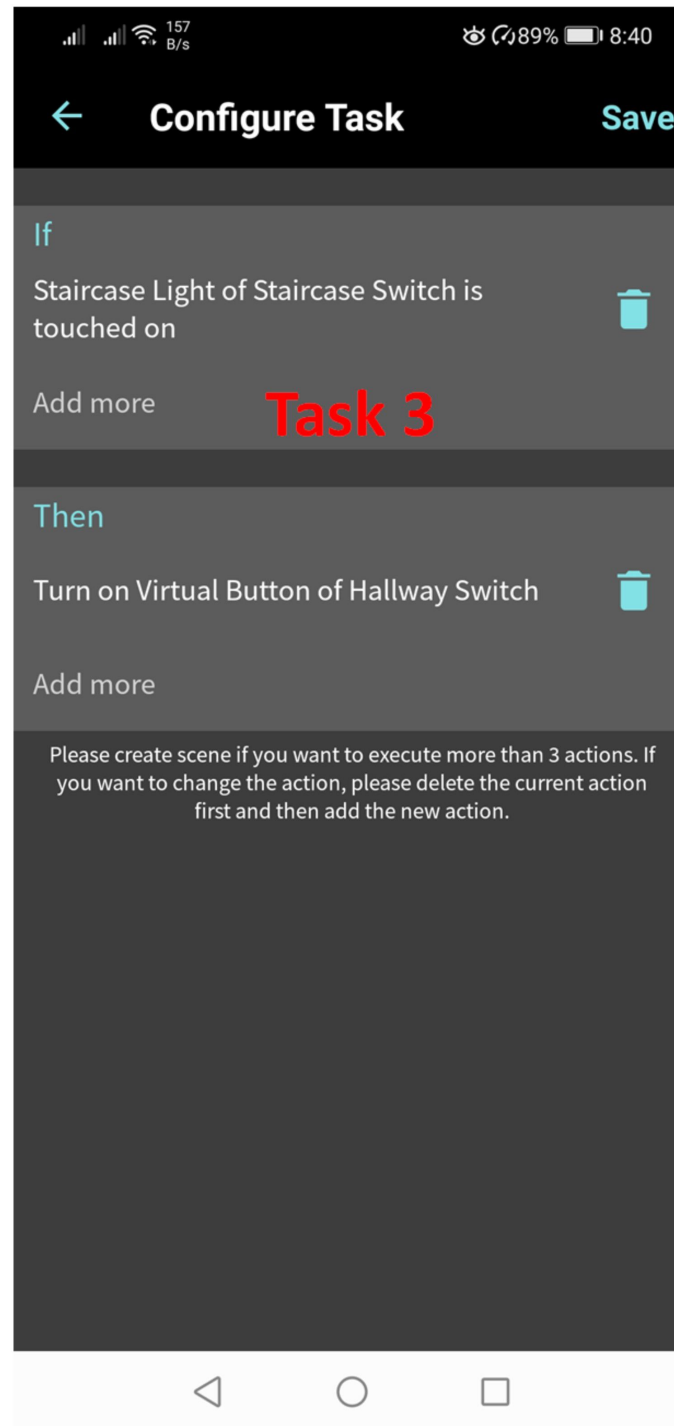
The screen includes a 'Save' button at the top right and a 'Task 1' label at the bottom. A note at the bottom states: 'Please create scene if you want to execute more than 3 actions. If you want to change the action, please delete the current action first and then add the new action.'



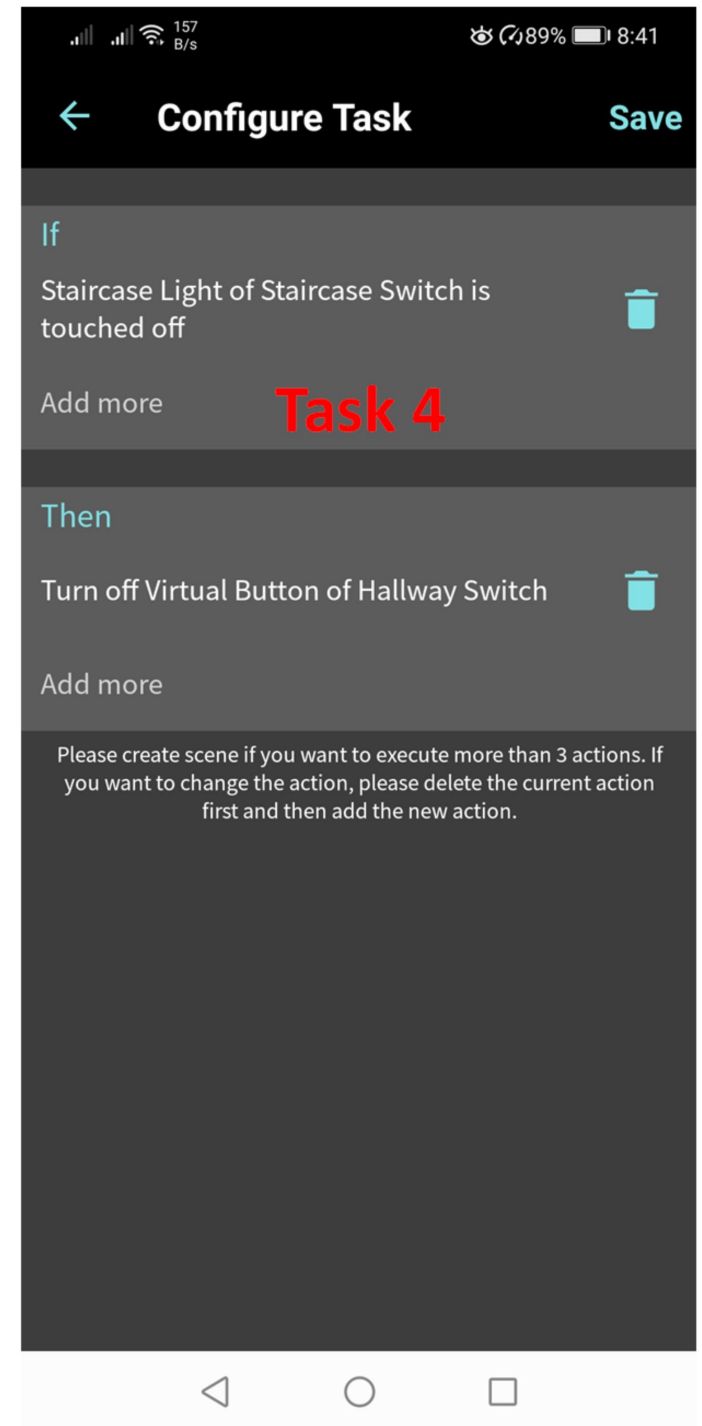
Condition become true **ONLY** when user turn off the Virtual Button of the Hallway Switch by physical **TOUCH**.

Eg. When user turn off the Virtual Button of the Hallway Switch physically by touch, then the Staircase Light of Staircase Switch will be turned off together as well because the condition was true.

Eg. When user turn off the Virtual Button of the Hallway Switch by Apps or remote control, the Staircase Light of Staircase Switch will NOT be turn off together because the Virtual Button was not off by physical touch.



Please create scene if you want to execute more than 3 actions. If you want to change the action, please delete the current action first and then add the new action.



Please create scene if you want to execute more than 3 actions. If you want to change the action, please delete the current action first and then add the new action.

